

DIALYSIS BEDS INFUSION BEDS

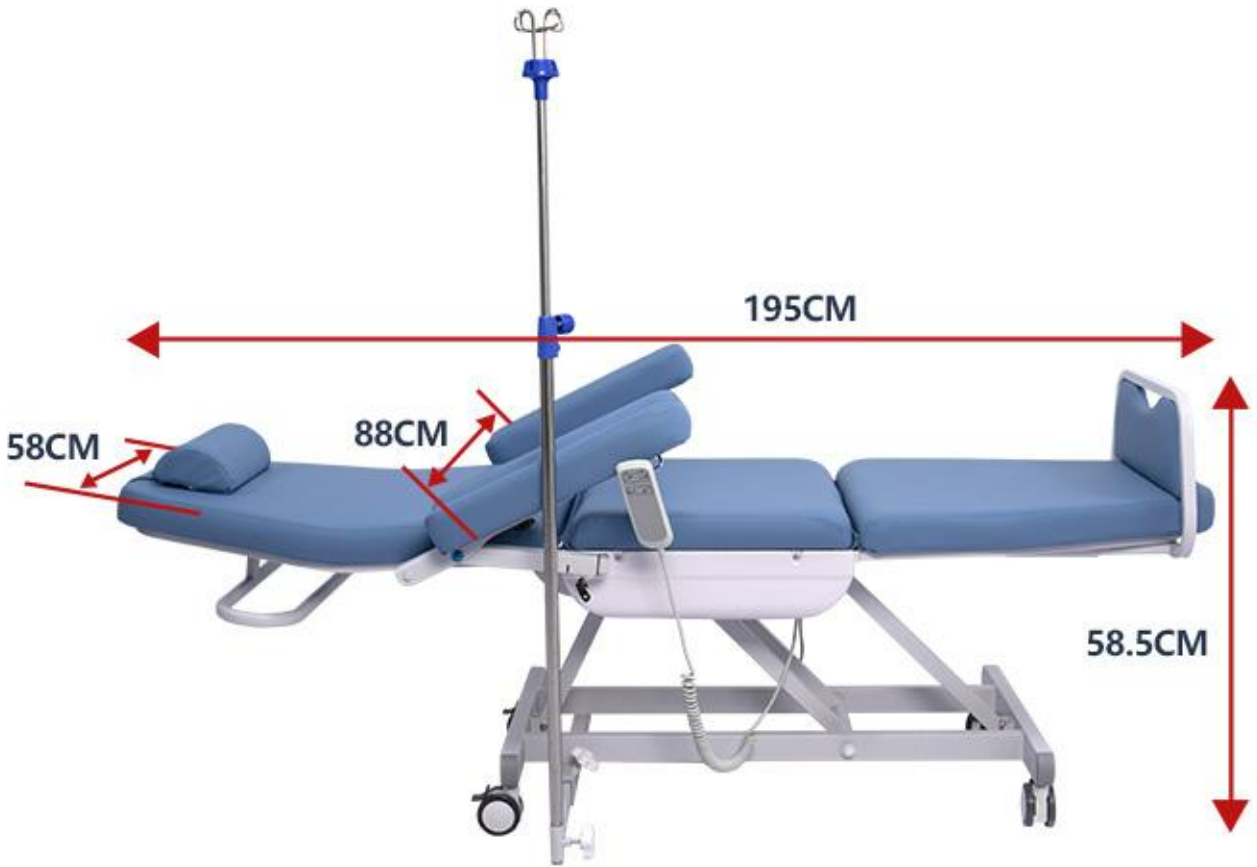
- ELECTRICALLY ADJUSTABLE FUNCTION
- MEDICAL MUTE UNIVERSAL WHEEL
- ADJUSTABLE INFUSION LEVER

DP-YS012C



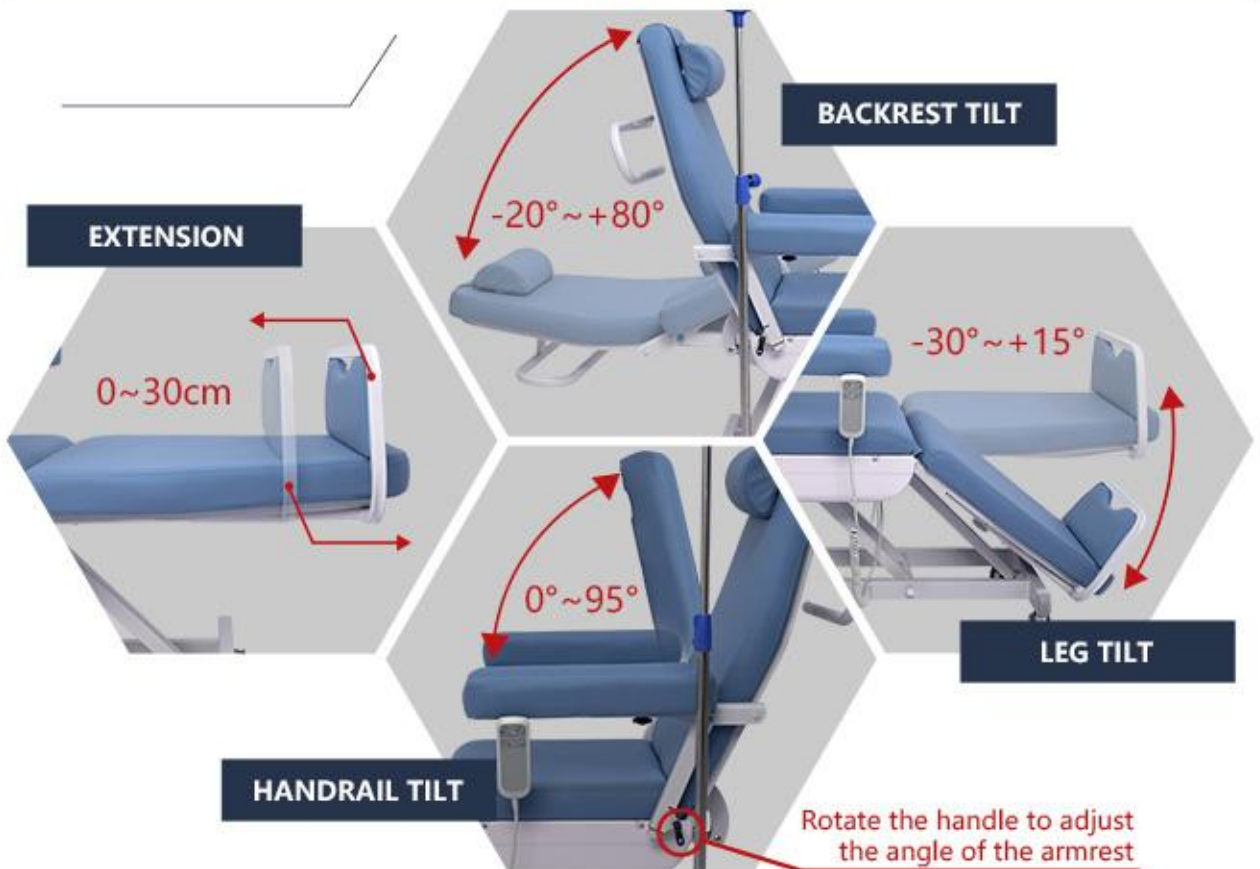
PRODUCT SIZE

Manual measurement, Deviation 1-2cm



MULTI-ANGLE ADJUSTMENT

comfortable angle is controlled by you



STRONG AND STABLE FRAME

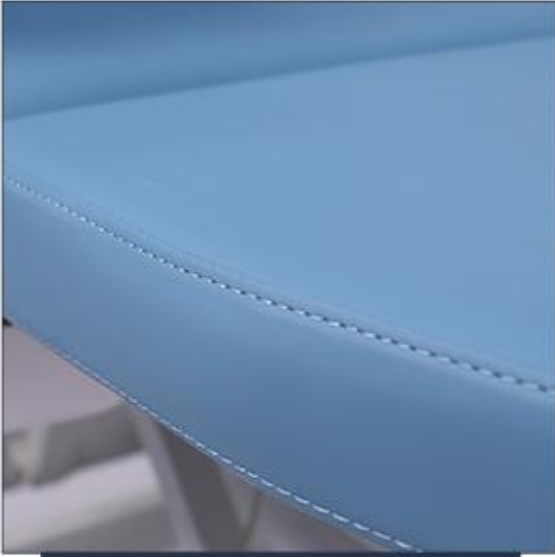
High strength metal frame

MAX LOAD 150KG

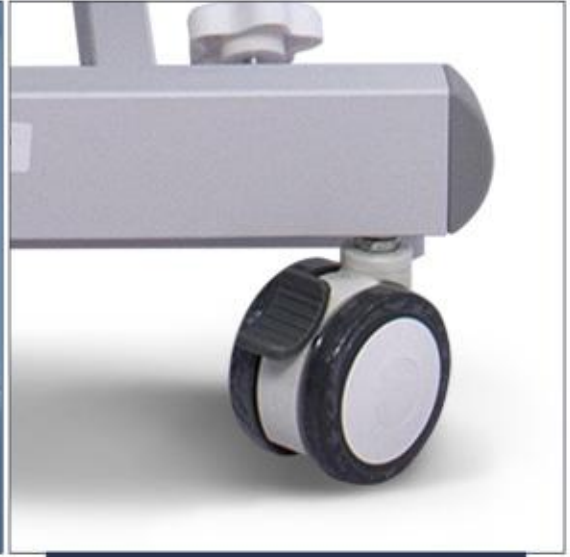


OTHER DETAILS

Details that add to the guest experience



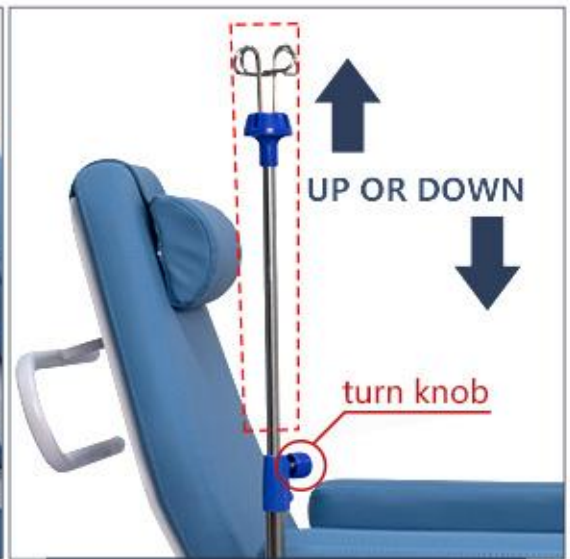
WATER AND OIL PROOF
PVC LEATHER



CASTERS CAN BE
MOVED OR LOCKED



BACKREST ARMRESTS
FOR HANGING ITEMS



BACKREST ARMRESTS
FOR HANGING ITEMS