

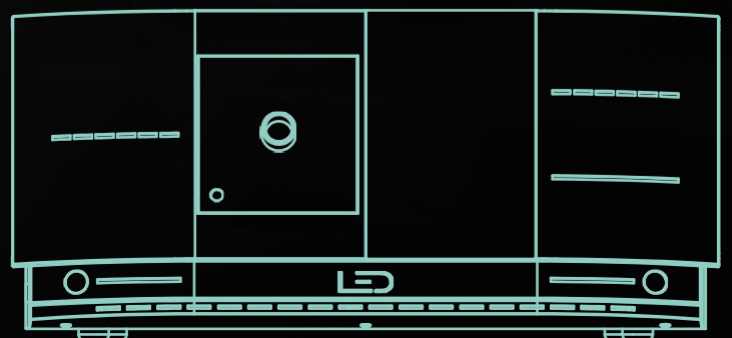
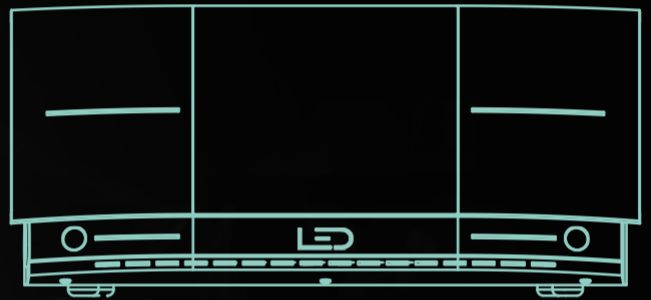
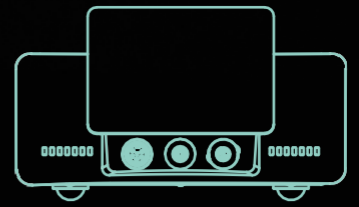
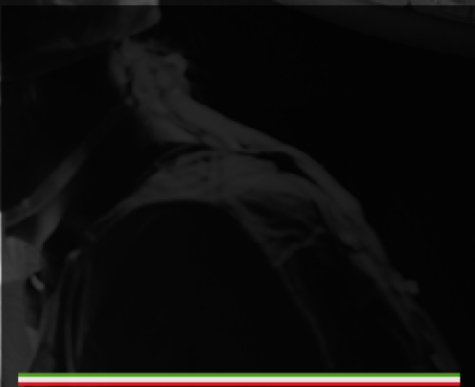
# SURTRON TOUCH *HP*

ELECTROSURGICAL UNIT



*ONE TOUCH,  
MANY SURGERIES.*





# SURTRON® TOUCH HP 80D



## Safety

EN60601-1  
EN60601-1-2  
EN60601-2-2  
Electrical Class: I CF  
MDR 2017/745/UE Class: II b

## SURTRON® TOUCH HP 80D, small is more

**SURTRON® TOUCH HP 80D** is a radiofrequency electrocautery unit suitable for minor monopolar surgery.

**SURTRON® TOUCH HP 80D** has a multi-function selector which makes cutting "CUT", cut coagulation "BLEND", coagulation "COAG" and micro-coagulation "MICRO" possible.

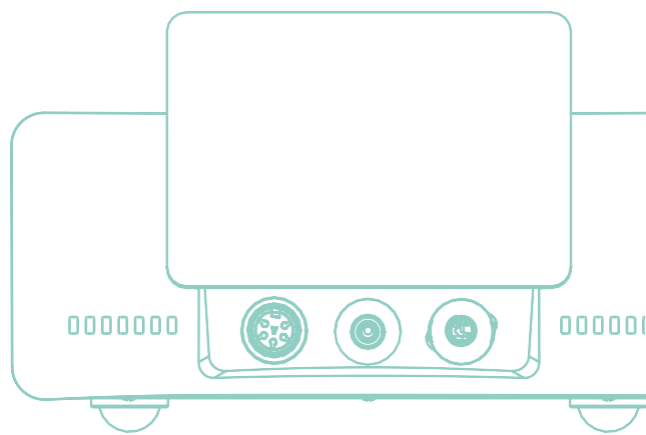
The addition of the switching power supply represents an advanced and efficient solution for power conversion and stability.

The one-board microcontroller and 4.3" touchscreen display guarantees consistent safety and reliability under any conditions.

**SURTRON® TOUCH HP 80D** offers outstanding professional surgical results due to its ergonomic and superior safety features.

**40% LIGHTER**

**SURTRON® TOUCH HP 80D** has a total weight of 1.4 kgs, 40% less than the previous generation.



## Features

Reference code	<b>10100.T08</b>
Maximum output power CUT	<b>80 W – 400 Ω</b>
Maximum output power BLEND	<b>60 W – 400 Ω</b>
Maximum output power COAG	<b>50 W – 400 Ω</b>
Maximum output power MICRO	<b>20 W – 600 Ω</b>
Working frequency	<b>700 kHz</b>
Patient circuit	<b>F</b>
Selectable input voltage	<b>100-240 Vac</b>
Mains frequency	<b>50-60 Hz</b>
Electrical input power	<b>200 VA</b>
Size WxHxD mm	<b>190x85x239</b>
Weight	<b>2,5 Kgs</b>



## Standard accessories

Reusable monopolar handle	<b>00206.00</b>
Assorted electrodes (10 pcs)	<b>00500.00</b>
Cable for neutral electrode	<b>00404.08_S</b>
Steel neutral electrode	<b>5365A</b>
Foot switch	<b>00304.00</b>
Power supply cable 2 mt	<b>00100.03</b>
Electrodes and handle support	<b>00202.00-9005</b>



# ADAPTABLE

SURTRON<sup>®</sup> TOUCH HP 80D can be powered at different voltages.

