

For how to attach Foto X to your camera, or to the Olympus M10 Mark III, refer to the back panel.

Overview

The Foto X Spacer can be turned clockwise and counter-clockwise to adjust focus. For most uses the Spacer should be adjusted to the -0- position such that the two white Focus Marks are aligned. At this Spacer position the camera lens' auto-focus system will allow for clear imaging of most dermoscopic features. *When using the Foto X visually, or when imaging deeper crevices, it may be necessary to adjust the Spacer position inward or outward from this -0- mark.*

Polarization

Power on the Foto X by tapping the Power Button. Foto X defaults to polarized lighting mode every time it is turned on. Tapping the Power Button again toggles between polarized lighting (24 LEDs on) and non-polarized lighting (8 LEDs on). *Polarized lighting allows viewing of deeper skin features, while non-polarized lighting is for viewing superficial skin features.*

Brightness Adjustment

Lighting can be adjusted between four brightness levels by tapping the + or - on the Brightness Button. For typical use, the #2 or #3 brightness level provides enough light while prolonging battery life. The Foto X remembers the most recently used brightness setting.

Faceplate

The Faceplate can be removed by unsnapping at the Fingernail Notches at the end of the spacer. This is useful for non-contact imaging, such as when imaging lesions where blanching of blood vessels is of concern. The glass faceplate can be re-installed by snapping back into place.



IceCap® Covers

The Foto X is compatible with disposable *IceCap* snap-on covers for infection control. To use, push one over the Spacer with the Faceplate installed. To remove and dispose, simply pull off.

Charging

To charge your Foto X, plug the USB C cable into the charging port, and the other end of the USB cable into any USB port or USB charger (not included).

The four-level charge indicator illuminates with one to four LEDs to show approximate battery life remaining while the Foto X is in use and similarly, indicates approximate charge time remaining while charging.

Attaching Foto X to Camera

Option 1: Threaded Connection

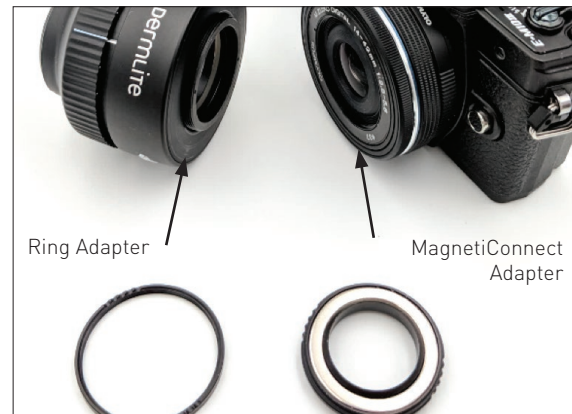
Foto X is set up to thread directly onto the Olympus camera lens using its integral 37mm filter thread. Thread it onto the camera by turning the Foto X clockwise against the camera lens.



Option 2: Magnetic Connection

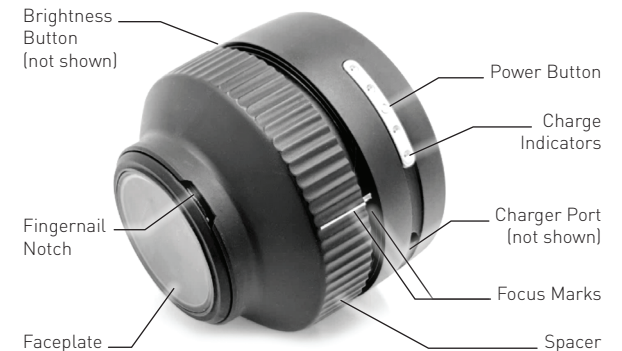
Alternatively, you can magnetically attach Foto X to your camera lens, allowing you to capture dermoscopic and clinical photos (without Foto X attached) in quick succession. This setup requires using a 37 mm MagnetiConnect® (dermlite.com/DLMC37) camera adapter and Ring Adapter (RA). Thread the 37mm *MagnetiConnect* camera adapter onto the camera lens, and thread the Ring Adapter onto the Foto X. *The Ring Adapter protects the 37mm threads on the FOTO X and aligns the Foto X concentrically with the camera lens when connected magnetically.*

MagnetiConnect adapters for camera lenses with larger filter thread diameters are available from DermLite or your Derm-Lite dealer. Simply refer to the filter thread diameter marked on the lens cap (e.g. 52mm).



QuickStart Guide

Suggested Settings for Olympus M10 Mark III



dermlite.com/fotox



DermLite is a registered trademarks of DermLite LLC | 21 Argonaut Unit A | Aliso Viejo CA 92656 | U.S.A. | Tel. +1-949-481-6384 | Fax +1-949-240-7492
Email: info@dermlite.com | www.dermlite.com | ©2024 by DermLite LLC | All rights reserved.
REF C DLFX-1711 | Patents/Trademarks: www.dermlite.com/patents

